



Cable Management Catalog

www.ectray.com





CABLE LADDER FOR INDUSTRY

Cable Ladders are lightweight, easy to install, and offer high load capacity to manage large cable runs.

Good heat dissipation performance can not only extend the service life of the cable, but also reduce the safety hazards caused by excessive temperature and ensure the stable operation of the power system.



Cable Ladder-C

Complies with UNE-EN 61537

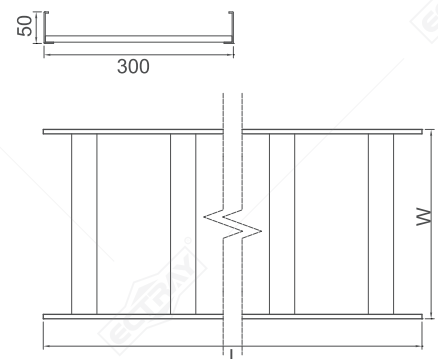
Material:

- Zinc Aluminum Magnesium (ZM)
- Galvanised (GI)
- Stainless steel 304/316 (SS)
- Aluminum
- Power coating
- Hot dip galvanised

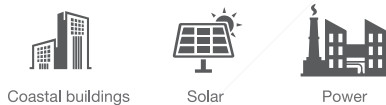


No fire	Corrosion resistance	Strong load-bearing capacity	-40°C / 150°C	Installation spacing 1.5m

Ordering Code	WxH/MM	Length/MM
CL-C-200-50	50x50	2000/2500/3000
CL-C-300-50	100x50	2000/2500/3000
CL-C-400-50	200x50	2000/2500/3000
CL-C-500-50	300x50	2000/2500/3000
CL-C-600-50	400x50	2000/2500/3000
CL-C-200-75	100x75	2000/2500/3000
CL-C-300-75	200x75	2000/2500/3000
CL-C-400-75	300x75	2000/2500/3000
CL-C-500-75	400x75	2000/2500/3000
CL-C-600-75	500x75	2000/2500/3000
CL-C-200-100	100x100	2000/2500/3000
CL-C-300-100	200x100	2000/2500/3000
CL-C-400-100	300x100	2000/2500/3000
CL-C-500-100	400x100	2000/2500/3000
CL-C-600-100	500x100	2000/2500/3000
CL-C-200-150	200x150	2000/2500/3000
CL-C-300-150	300x150	2000/2500/3000
CL-C-400-150	400x150	2000/2500/3000
CL-C-500-150	500x150	2000/2500/3000
CL-C-600-150	600x150	2000/2500/3000



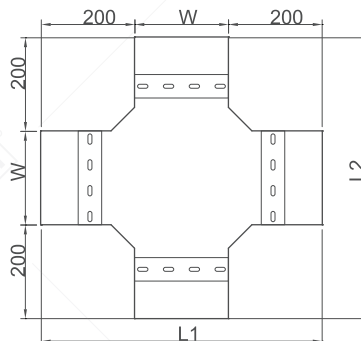
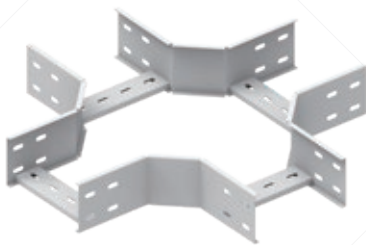
*custom made: This product supports customization.



CL-Cross



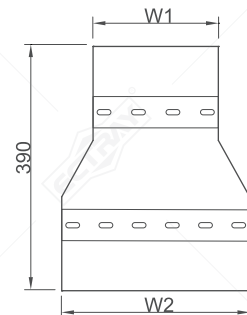
Ordering Code	W/mm	H/mm	L/mm
CL-Cross-200-50-600	200	50	600
CL-Cross-300-50-700	300	50	700
CL-Cross-400-50-800	400	50	800
CL-Cross-500-50-900	500	50	900
CL-Cross-600-50-1000	600	50	1000
CL-Cross-200-75-600	200	75	600
CL-Cross-300-75-700	300	75	700
CL-Cross-400-75-800	400	75	800
CL-Cross-500-75-900	500	75	900
CL-Cross-600-75-1000	600	75	1000
CL-Cross-200-100-600	200	100	600
CL-Cross-300-100-700	300	100	700
CL-Cross-400-100-800	400	100	800
CL-Cross-500-100-900	500	100	900
CL-Cross-600-100-1000	600	100	1000
CL-Cross-200-150-600	200	150	600
CL-Cross-300-150-700	300	150	700
CL-Cross-400-150-800	400	150	800
CL-Cross-500-150-900	500	150	900
CL-Cross-600-150-1000	600	150	1000



CL-Middle Reducer



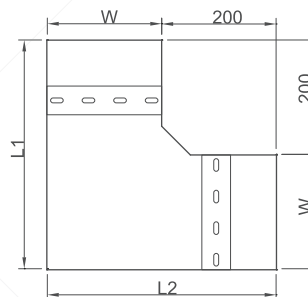
Ordering Code	W1 mm	W2 mm	H/mm	L/mm
CL-MIR-200-50-390	200	300	50	390
CL-MIR-300-50-390	300	400	50	390
CL-MIR-400-50-390	400	500	50	390
CL-MIR-500-50-390	500	600	50	390
CL-MIR-600-50-390	600	700	50	390
CL-MIR-200-75-390	200	300	75	390
CL-MIR-300-75-390	300	400	75	390
CL-MIR-400-75-390	400	500	75	390
CL-MIR-500-75-390	500	600	75	390
CL-MIR-600-75-390	600	700	75	390
CL-MIR-200-100-390	200	300	100	390
CL-MIR-300-100-390	300	400	100	390
CL-MIR-400-100-390	400	500	100	390
CL-MIR-500-100-390	500	600	100	390
CL-MIR-600-100-390	600	700	100	390
CL-MIR-200-150-390	200	300	150	390
CL-MIR-300-150-390	300	400	150	390
CL-MIR-400-150-390	400	500	150 <td 390	
CL-MIR-500-150-390	500	600	150	390
CL-MIR-600-150-390	600	700	150	390



CL-90°Bend



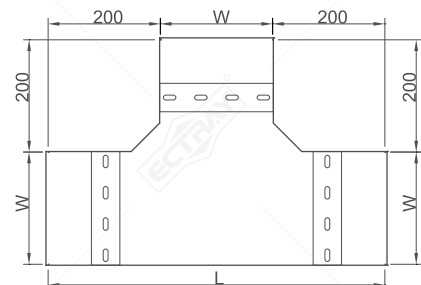
Ordering Code	W/mm	H/mm	L/mm
CL-90°Bend-200-50-470	200	50	470
CL-90°Bend-300-50-570	300	50	570
CL-90°Bend-400-50-670	400	50	670
CL-90°Bend-500-50-770	500	50	770
CL-90°Bend-600-50-870	600	50	870
CL-90°Bend-200-75-470	200	75	470
CL-90°Bend-300-75-570	300	75	570
CL-90°Bend-400-75-670	400	75	670
CL-90°Bend-500-75-770	500	75	770
CL-90°Bend-600-75-870	600	75	870
CL-90°Bend-200-100-470	200	100	470
CL-90°Bend-300-100-570	300	100	570
CL-90°Bend-400-100-670	400	100	670
CL-90°Bend-500-100-770	500	100	770
CL-90°Bend-600-100-870	600	100	870
CL-90°Bend-200-150-470	200	150	470
CL-90°Bend-300-150-570	300	150	570
CL-90°Bend-400-150-670	400	150	670
CL-90°Bend-500-150-770	500	150	770
CL-90°Bend-600-150-870	600	150	870



CL-Tee



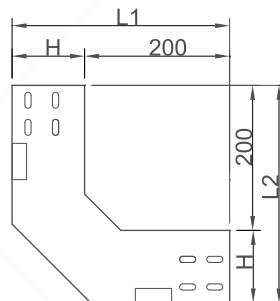
Ordering Code	W/mm	H/mm	L/mm
CL-Tee-200-50-600	200	50	600
CL-Tee-300-50-700	300	50	700
CL-Tee-400-50-800	400	50	800
CL-Tee-500-50-900	500	50	900
CL-Tee-600-50-1000	600	50	1000
CL-Tee-200-75-600	200	75	600
CL-Tee-300-75-700	300	75	700
CL-Tee-400-75-800	400	75	800
CL-Tee-500-75-900	500	75	900
CL-Tee-600-75-1000	600	75	1000
CL-Tee-200-100-600	200	100	600
CL-Tee-300-100-700	300	100	700
CL-Tee-400-100-800	400	100	800
CL-Tee-500-100-900	500	100	900
CL-Tee-600-100-1000	600	100	1000
CL-Tee-200-150-600	200	150	600
CL-Tee-300-150-700	300	150	700
CL-Tee-400-150-800	400	150	800
CL-Tee-500-150-900	500	150	900
CL-Tee-600-150-1000	600	150	1000



CL-Internal Riser



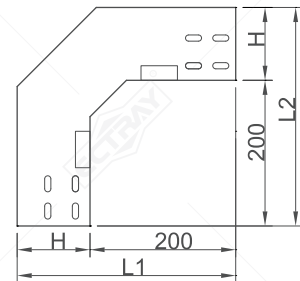
Ordering Code	W/mm	H/mm	L/mm
CL-INR-200-50-320	200	50	320
CL-INR-300-50-320	300	50	320
CL-INR-400-50-320	400	50	320
CL-INR-500-50-320	500	50	320
CL-INR-600-50-320	600	50	320
CL-INR-200-75-345	200	75	345
CL-INR-300-75-345	300	75	345
CL-INR-400-75-345	400	75	345
CL-INR-500-75-345	500	75	345
CL-INR-600-75-345	600	75	345
CL-INR-200-100-370	200	100	370
CL-INR-300-100-370	300	100	370
CL-INR-400-100-370	400	100	370
CL-INR-500-100-370	500	100	370
CL-INR-600-100-370	600	100	370
CL-INR-200-150-420	200	150	420
CL-INR-300-150-420	300	150	420
CL-INR-400-150-420	400	150	420
CL-INR-500-150-420	500	150	420
CL-INR-600-150-420	600	150	420



CL-External Riser



Ordering Code	W/mm	H/mm	L/mm
CL-EXR-200-50-320	200	50	320
CL-EXR-300-50-320	300	50	320
CL-EXR-400-50-320	400	50	320
CL-EXR-500-50-320	500	50	320
CL-EXR-600-50-320	600	50	320
CL-EXR-200-75-345	200	75	345
CL-EXR-300-75-345	300	75	345
CL-EXR-400-75-345	400	75	345
CL-EXR-500-75-345	500	75	345
CL-EXR-600-75-345	600	75	345
CL-EXR-200-100-370	200	100	370
CL-EXR-300-100-370	300	100	370
CL-EXR-400-100-370	400	100	370
CL-EXR-500-100-370	500	100	370
CL-EXR-600-100-370	600	100	370
CL-EXR-200-150-420	200	150	420
CL-EXR-300-150-420	300	150	420
CL-EXR-400-150-420	400	150	420
CL-EXR-500-150-420	500	150	420
CL-EXR-600-150-420	600	150	420



Under Floor Stand

Ordering Code	L/mm
UFS-200	200
UFS-300	300
UFS-400	400
UFS-500	500
UFS-600	600



Wall Bracket - 1

Ordering Code	L/mm
WB-1-200	220
WB-1-300	320
WB-1-400	420
WB-1-500	520
WB-1-600	620



Wall Bracket - 2

Ordering Code	L/mm
WB-2-200	220
WB-2-300	320
WB-2-400	420
WB-2-500	520
WB-2-600	620



Straight Bracket

Ordering Code	L/mm
SB-200	260
SB-300	360
SB-400	460
SB-500	560
SB-600	660



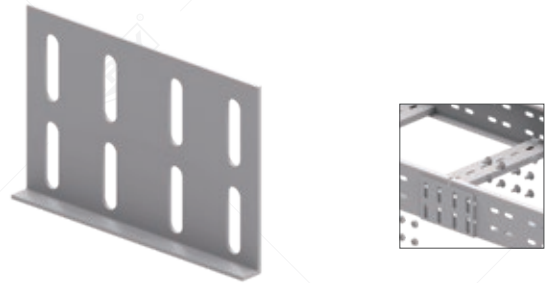
Straight Ceiling Bracket

Ordering Code	L/mm
SCB-200	200
SCB-300	300
SCB-400	400
SCB-500	500



Splice Plate

Ordering Code	H/mm	L/mm
SP-50	50	140
SP-75	75	140
SP-100	100	140
SP-150	150	140



Divider

Ordering Code	H/mm	L/mm
D-35	35	-
D-85	85	-



Bonding Jumper

Ordering Code	H/mm	L/mm
BJ	-	-



Cover Clamp 1

Ordering Code	H/mm	L/mm
CHB&FN	-	-



Cover Clamp 2

Ordering Code	H/mm	L/mm
CC2	-	-





Electrifying your life,connecting the future

Guangdong Yuchang Technology Co.,Ltd.